

THE EFFECTS OF MULTI-SCALE HETEROGENEITIES ON WAVE-EQUATION MIGRATION

YONG MA and PAUL SAVA

Center for Wave Phenomena, Colorado School of Mines, Golden, CO 80401, U.S.A.

(Received May 7, 2009; revised version accepted July 6, 2009)

ABSTRACT

Ma, Y. and Sava, P., 2009. The effects of multi-scale heterogeneities on wave-equation migration. *Journal of Seismic Exploration*, 18: 357-383.

Velocity models used for wavefield-based seismic imaging represent approximations of the velocity characterizing the area under investigation. We can conceptually decompose the real velocity model into a background component which can be inferred using conventional velocity analysis techniques, and into another component encapsulating the model heterogeneities. This unknown component is responsible for mispositioning of reflection energy which usually takes the form of imaging artifacts. Model heterogeneity can be described stochastically using, for example, correlated Gaussian random distributions or fractal distributions. Data simulated for the various distributions are characterized by spectra with different shapes when analyzed in the log-log domain. For example, Gaussian distributions are characterized by exponential functions and fractal distributions are characterized by linear functions with fractional slopes. These properties hold for both data and migrated images after deconvolution of the source wavelet. On the other hand, the image heterogeneities induced by model heterogeneities can be considered as noise to be removed by an image filtering operation. Among many possibilities, filtering with the seislet transform (a wavelet transform technique) and Gabor-Wigner distribution (a time-frequency analysis technique) are effective at suppressing noise, although both techniques affect the signal corresponding to the major geologic structure. Such filtering can be applied at different stages of wave-equation imaging, for example on data, on the reconstructed wavefields, or on the migrated image. Of all possibilities, filtering of the reconstructed wavefields is most effective.

KEYWORDS: heterogeneity, fractal, multi-scale, noise attenuation, wave-equation migration.

INTRODUCTION

Wave-equation migration consists of two steps (Claerbout, 1985). The first step represents wavefield reconstruction at every location in the subsurface from data recorded at the surface using a numeric solution to a wave equation. The second step consists of extracting reflectivity information from the reconstructed wavefields using an imaging condition. The accuracy of wavefield reconstruction, which directly determines the quality of migrated images, depends on the accuracy of both the velocity model and the wave-equation used for wavefield reconstruction.

Conventionally, we decompose the earth's velocity into two models corresponding to large-scale (low-frequency) and to small-scale (high-frequency) components. We refer to the large-scale component as the velocity model and to the small-scale component as the reflectivity model. The large-scale component of the model is used for wavefield reconstruction, and the small-scale component of the model is the object of the imaging condition. However, real geologic environments do not follow this clear separation of scales. Evidence from well logs and rock outcrops indicates that a better description of the subsurface requires heterogeneity at all scales of variation (Richter-Bernburg, 1987). We refer to this type of models as *multi-scale*. The multi-scale variability is usually ignored in imaging. As a consequence, imaging with smooth models leads to inaccurate wavefield reconstruction and to corresponding distortions of migrated images.

In this paper, we study the effects of multi-scale heterogeneity on imaging. First, we analyze various types of heterogeneity, their impact on seismic data and migrated images and whether this information can be extracted from data or migrated images. Second, we evaluate techniques designed to attenuate the artifacts caused by disregarding the mid-scale heterogeneities in the imaging process. Although not necessarily consistent with geology, the goal here is to eliminate from the migrated images what is inconsistent with the assumed bi-modal distribution described in the preceding paragraphs.

In the first part of this paper, we investigate the composition of multi-scale heterogeneities. Conventionally, velocity heterogeneity is described as random perturbations superposed on a large-scale background distribution (Hoshiba, 2000). An alternative description of mid-scale heterogeneities is based on the fractal character of natural objects, which is documented by many geological and geophysical observations, e.g., rock fragments, faults, earthquakes, and well logs (Mandelbrot, 1982; Turcotte, 1997; Dolan et al., 1998). Fractals possess the property of scale invariance which means that they are built using self-similarity relations.

Within our imaging framework, we regard the artifacts caused by the absence of mid-scale heterogeneities from the models used for imaging as noise which we attempt to remove from the images. From the wide variety of techniques that can be employed for noise attenuation, we consider methods from the wavelet-decomposition family and from the time-frequency analysis family. Our choice of wavelet-like decomposition is the seislet transform which is specifically designed for application to seismic data. The seislet transform decomposes seismic signals to different scales using the dominant slope at every location (Fomel, 2006). Then, the decomposed data can be truncated to emphasize the components that are most consistent with our assumption of the local slopes. Our choice of time-frequency decomposition is similar to the Wigner distribution functions (WDF) (Wigner, 1932; Ville, 1948), which can be employed for noise attenuation in seismic migration, e.g., as an interferometric imaging condition (Sava and Poliannikov, 2008). A similar approach is adopted by Borcea et al. (2006). Imaging conditions based directly on WDFs can attenuate significant noise from the reconstructed wavefields, but have the drawback that they make the phase of output signals ambiguous due to the quadratic nature of the transformation (Cohen, 1995). To address this problem, we employ an alternative time-frequency method called Gabor-Wigner distribution (Pei and Ding, 2007) which does not suffer from that drawback.

MODELS OF HETEROGENEITY

The velocity model of the subsurface cannot be known exactly in a realistic field experiment, but it can be approximated as the superposition of a known background velocity and unknown perturbations. Fig. 1(a) shows a smooth velocity distribution without fine-scale perturbations. The reflectivity characterizing this smooth background is indistinct, as shown in Fig. 1(b). On the other hand, stratigraphy can be represented by a blocky model as shown in Fig. 2(a). The reflectivity in Fig. 2(b) characterizing this model marks the main reflectors in the subsurface which are the main target of seismic imaging. Additionally, random fluctuations can be introduced in the velocity model to add heterogeneity at various scales (Hoshiya, 2000). In the following section, we discuss different models for subsurface heterogeneity.

Gaussian heterogeneity

Mid-scale velocity heterogeneities can be approximated by random distributions. Correlated Gaussian random distributions can be constructed by convolution of uncorrelated random noise $n(x)$ with a Gaussian smoothing function $g(x)$

$$r_g(x) = n(x) * g(x) \quad . \quad (1)$$

The Gaussian function $g(x)$ is obtained by inverse Fourier transform of

$$G(k) = e^{-\sigma^2 k^2/4} , \quad (2)$$

where σ governs the correlation distance and k represents the wavenumber associated with variable x . By definition, we can relate the wavenumber k with the wavelength λ by $\lambda = 2\pi/k$. Then, we can write

$$G(\lambda) = e^{-\sigma^2 \pi^2 / \lambda^2} , \quad (3)$$

therefore, by taking the natural logarithm, we obtain

$$\ln G = -\pi^2 \sigma^2 e^{-\ln \lambda} . \quad (4)$$

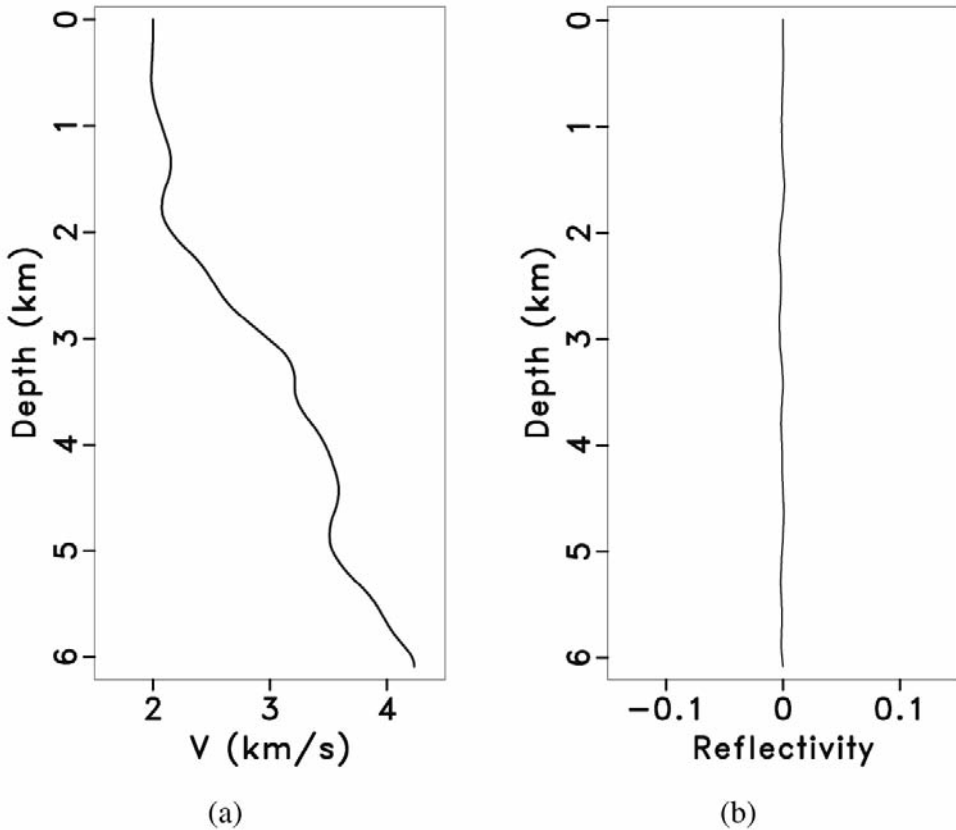


Fig. 1. (a) A smooth background vertical velocity profile that has no significant local heterogeneity to generate details in the reflection coefficients, which is shown in (b).

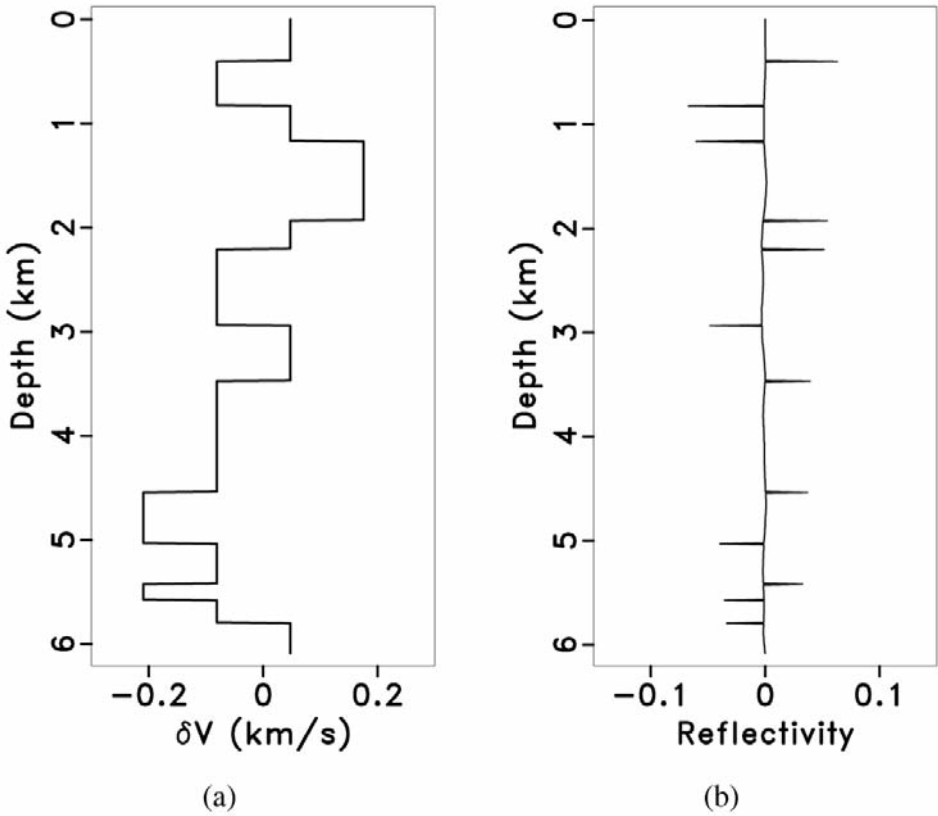


Fig. 2. (a) A blocky heterogeneity and (b) its resulting reflection-coefficient series in depth.

The interpretation of eq. (4) is that the $\ln G - \ln \lambda$ dependence is exponential. Furthermore, if we observe random noise with this general dependence, then we can conclude that the input signal has Gaussian character. Fig. 3(a) shows an example of correlated Gaussian random noise with 10 m correlation in depth and Fig. 3(b) shows the associated reflection coefficients. Fig. 4 shows a 2D example of Gaussian random noise with correlation lengths in the horizontal and vertical directions of 0.05 km and 0.01 km, respectively.

Fractal heterogeneity

By definition, fractals are quantities characterized by self-similarity (Mandelbrot, 1982). Fractals are often initiated with a large scale generator which is repeated iteratively at finer scales. For example, for a generator function $l(x)$, a self-similar fractal function has the property

$$l(rx) = l(x)r^{Ha} \quad , \quad (5)$$

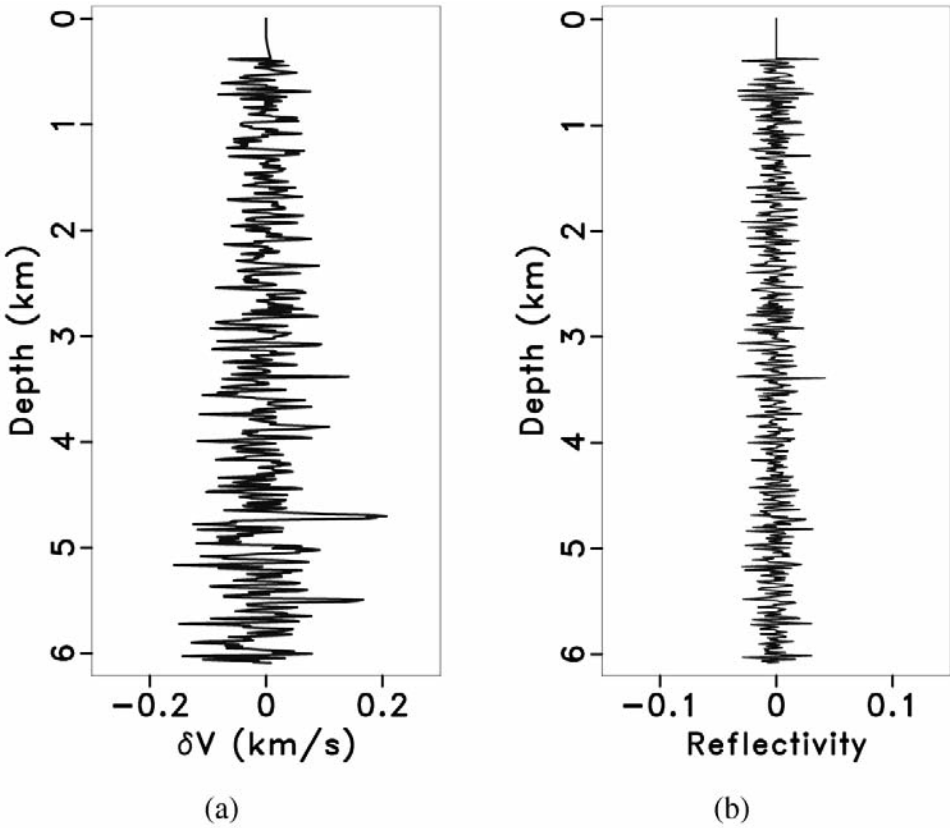


Fig. 3. (a) Gaussian random perturbations with 10 m correlation in depth. (b) The reflection-coefficient series governed by velocity heterogeneity in (a).

where r is a scaling factor, and H_a is known as the Hausdorff measure which determines the fractal dimension $D = 2 - H_a$ (Turcotte, 1997).

We can construct stochastic self-similar functions by convolution of uncorrelated random noise $n(x)$ with a fractal series $f(x)$

$$r_f(x) = n(x) * f(x) . \quad (6)$$

The fractal series $f(x)$ is obtained by inverse Fourier transform of a function with the power-law dependence:

$$F(k) = |k|^{-\beta} , \quad (7)$$

where β is related to the fractal dimension D as $\beta = 2.5 - D$ (Turcotte, 1997).

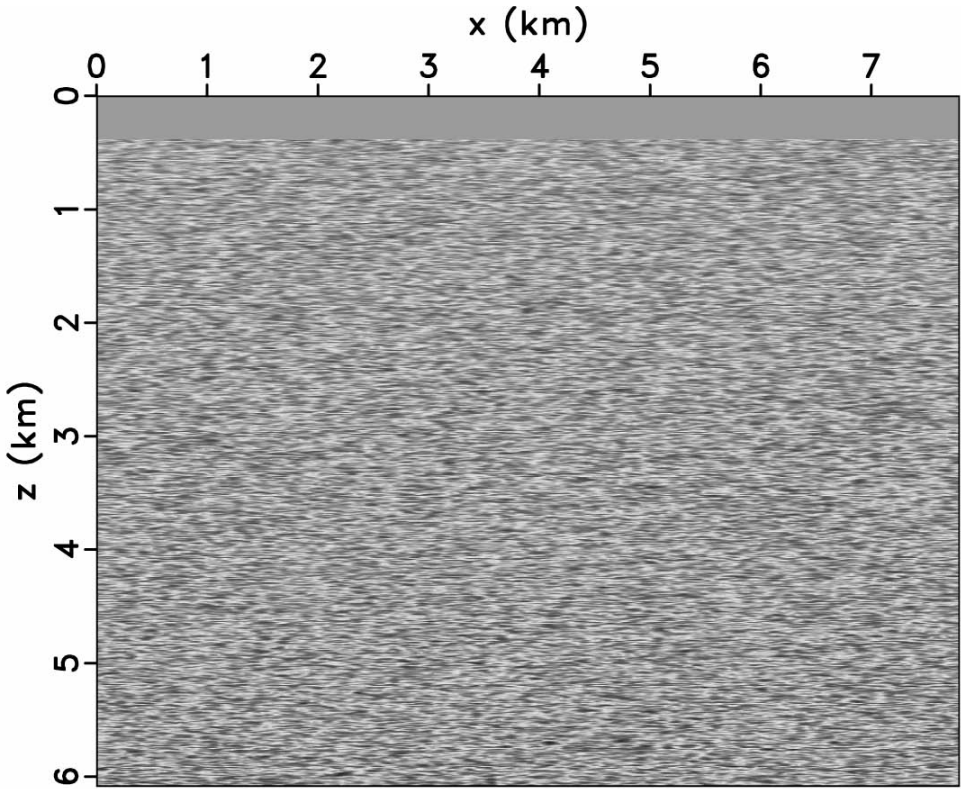


Fig. 4. 2D Gaussian random perturbation with correlation lengths in the horizontal and vertical directions of 0.05 km and 0.01 km, respectively.

Replacing the wavenumber k with the wavelength λ , we can write

$$F(\lambda) = (\lambda/2\pi)^\beta ; \tag{8}$$

therefore, by taking the natural logarithm, we obtain

$$\ln F = \beta \ln \lambda + \text{const} . \tag{9}$$

The interpretation of eq. (9) is that the $\ln F - \ln \lambda$ dependence is linear. Furthermore, if we observe random noise with this general dependence, then we can conclude that the noise has fractal character. Fig. 5(a) shows an example of fractal random noise with power law of order 0.5 and Fig. 5(b) shows the associated reflection coefficients. Fig. 6 shows a 2D example of fractal random noise with power law of order 0.5.

Comparison of Gaussian and fractal heterogeneities

Figs. 7(a)-(d) compare log-log spectra of the smooth background velocity and blocky velocity with correlated Gaussian random and fractal heterogeneities. Figs. 7(a) and 7(b) are log-log spectra of the smooth and blocky profiles in Figs. 1(a) and 2(a), respectively. In both spectra, the thick lines represent linear least-squares fits with the regression function $y = \alpha_1 x + \alpha_2$, and in both cases the slope of the fit is equal to 1. In contrast, the spatially correlated Gaussian random distribution shown in Fig. 7(c) and corresponding to Fig. 3(a) matches an exponential trend, as suggested by eq. (4) and indicated in the figure by the thick line corresponding to the regression function $y = \alpha_3 e^{-2x} + \alpha_4$. Similarly, the fractal random distribution shown in Fig. 7(d) and corresponding to Fig. 5(a) matches a linear trend, as suggested by eq. (9) and indicated in the figure by the thick line (Stefani and De, 2001). However, the linear slope is different from 1 which distinguishes the fractal profile from the blocky one shown in Fig. 7(b). In this case the slope of the log-log fit is 0.5.

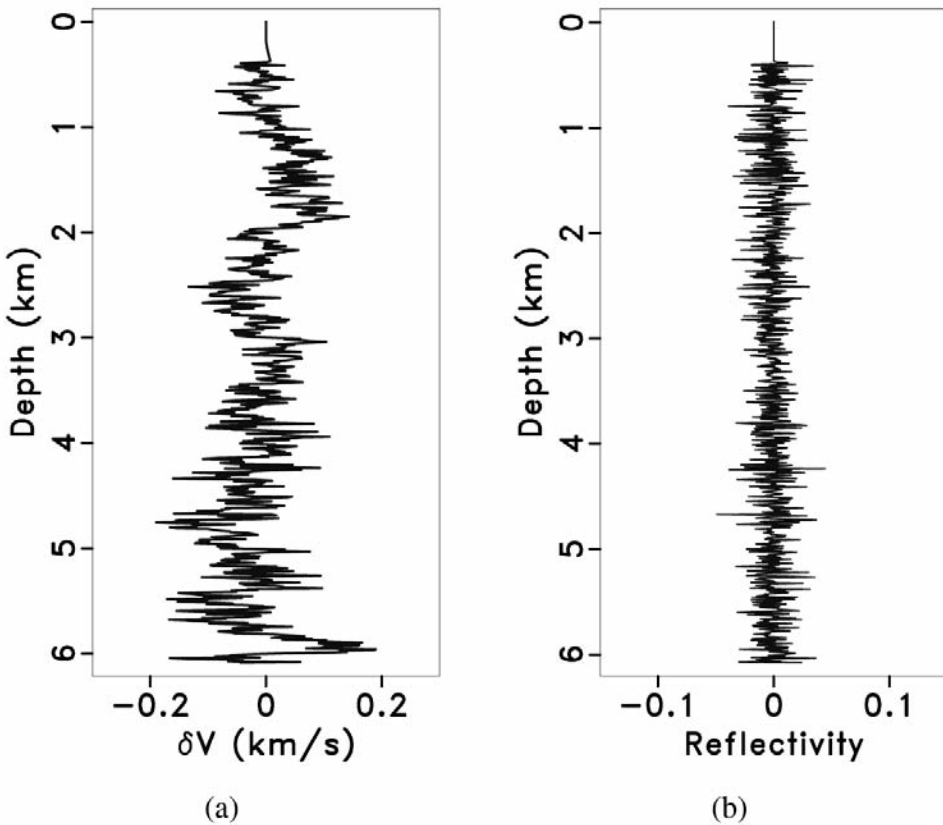


Fig. 5. (a) The fractal perturbations with a order of 0.50, corresponding to the log-log spectrum in Fig. 7(d). (b) The primary reflection-coefficient series governed by the fractal heterogeneity in (a).

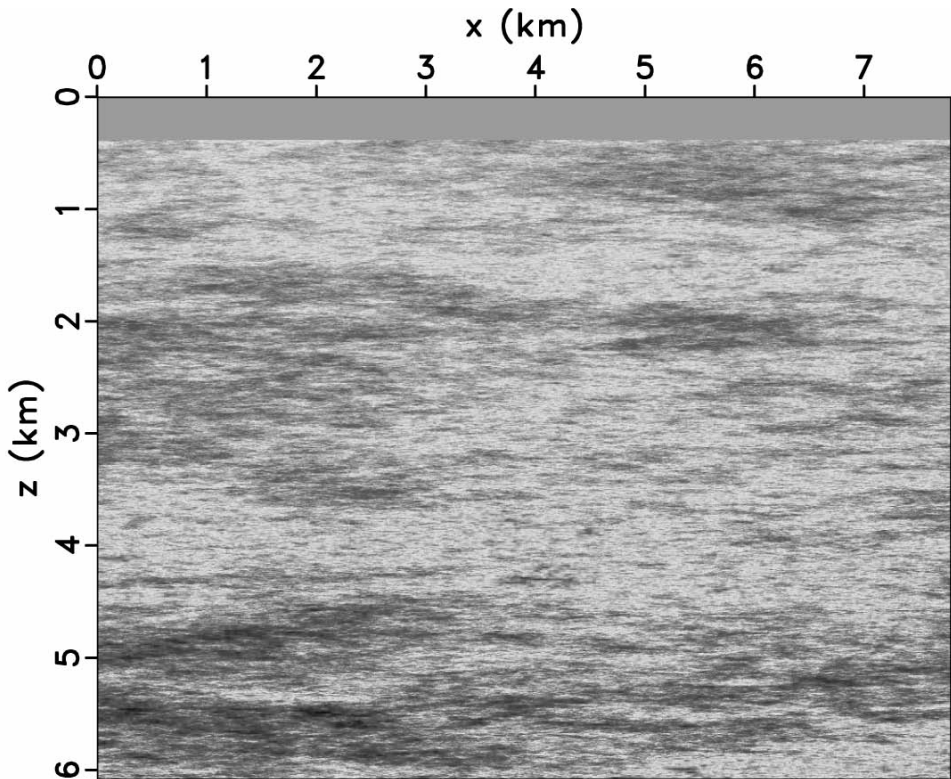


Fig. 6. Fractal random perturbations in a velocity model with power law of order $\beta = 0.5$.

DATA VARIABILITY DUE TO MODEL HETEROGENEITY

We consider 1D seismic responses of the reflection coefficients shown in Figs. 2(b), 3(b) and 5(b). We simulate data by convolution and by finite-difference modeling. In both cases we use a central frequency $f = 20$ Hz. The simulation sampling rates are $\Delta z = 10$ m and $\Delta t = 1$ ms. Figs. 8(a)-(c) show the data obtained by convolution and Figs. 9(a)-(c) show the data obtained by finite-difference modeling.

The main distinction between the two kinds of data modeling is that convolution represents single interaction of the wavelet with the reflectivity function, while finite-difference modeling incorporates other physical phenomena, e.g., multiple scattering. By studying the two types of simulation, we attempt to understand whether the character of the random fluctuation is influenced by wave propagation and whether we can recover information about the random character of the model through direct observations of recorded data.

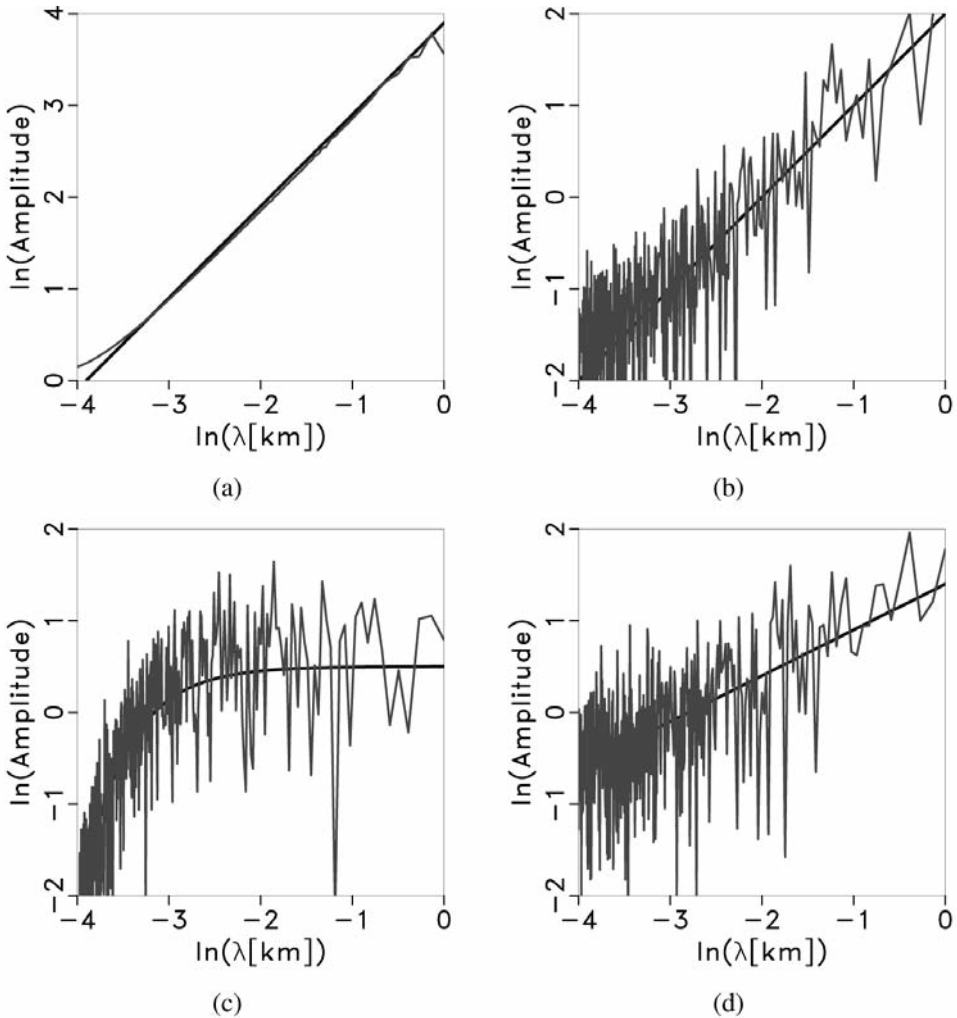


Fig. 7. Log-log spectra corresponding to (a) a smooth background velocity, (b) a blocky perturbation, and (c) a depth-correlated Gaussian random perturbation in log-log spectrum analyses. Thick lines are least-squares fittings of the log-log spectra. Both the smooth background and blocky perturbations show a trending slope of about 1. The correlated random noise in (c) gives an exponential relationship in the log-log graphic. In contrast, (d) shows a fractal power-law example, which depicts a linear least-squares fit with slope $\beta = 0.5$.

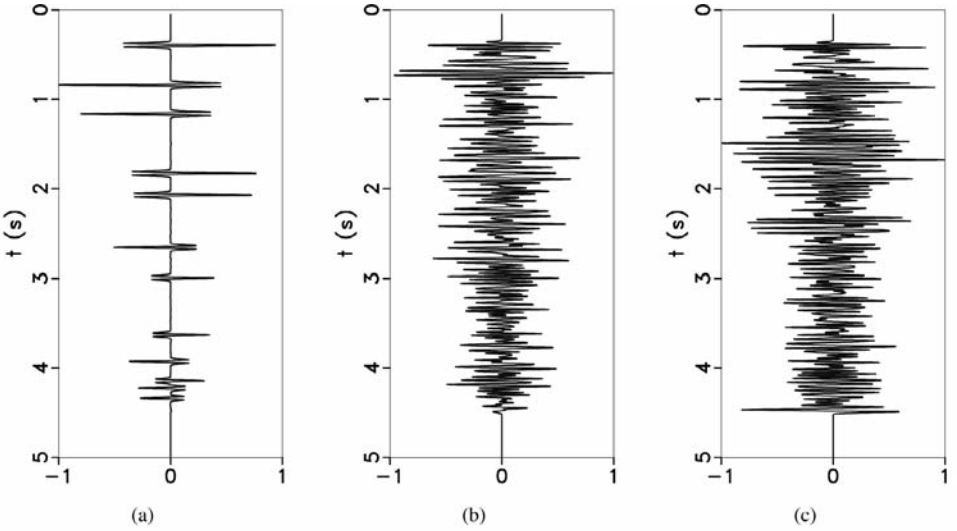


Fig. 8. (a)-(c). Synthetic seismic data obtained by convolution of a Ricker wavelet with the reflection coefficient series shown in Figs. 2(b), 3(b) and 5(b), respectively.

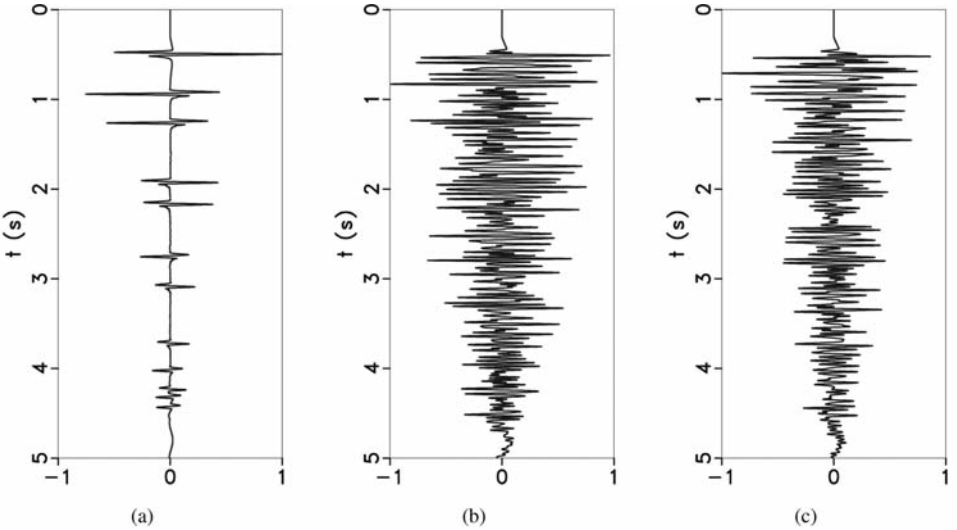


Fig. 9. Synthetic seismic data obtained by finite-differences modeling in 1-D models characterized by reflection coefficient series shown in Figs. 2(b), 3(b) and 5(b), respectively.

Fig. 10 compares log-log spectra of the data displayed in Figs. 9(a)-(b). The solid, dashed, and dotted lines correspond to data of the blocky, Gaussian, and fractal velocities, respectively. We can observe that the data for the blocky model, Fig. 9(a), overlaps the data corresponding to the models with random variations, Figs. 9(b)-(c), over the entire band of the signals. It is difficult to determine the parameters of the signal corresponding to the random fluctuations by simple spectral analysis, or to separate the main reflectors characterizing all models from events related to the random model fluctuations. Thus, we cannot design simple frequency/wavenumber filters to reduce the signal caused by the model random fluctuations.

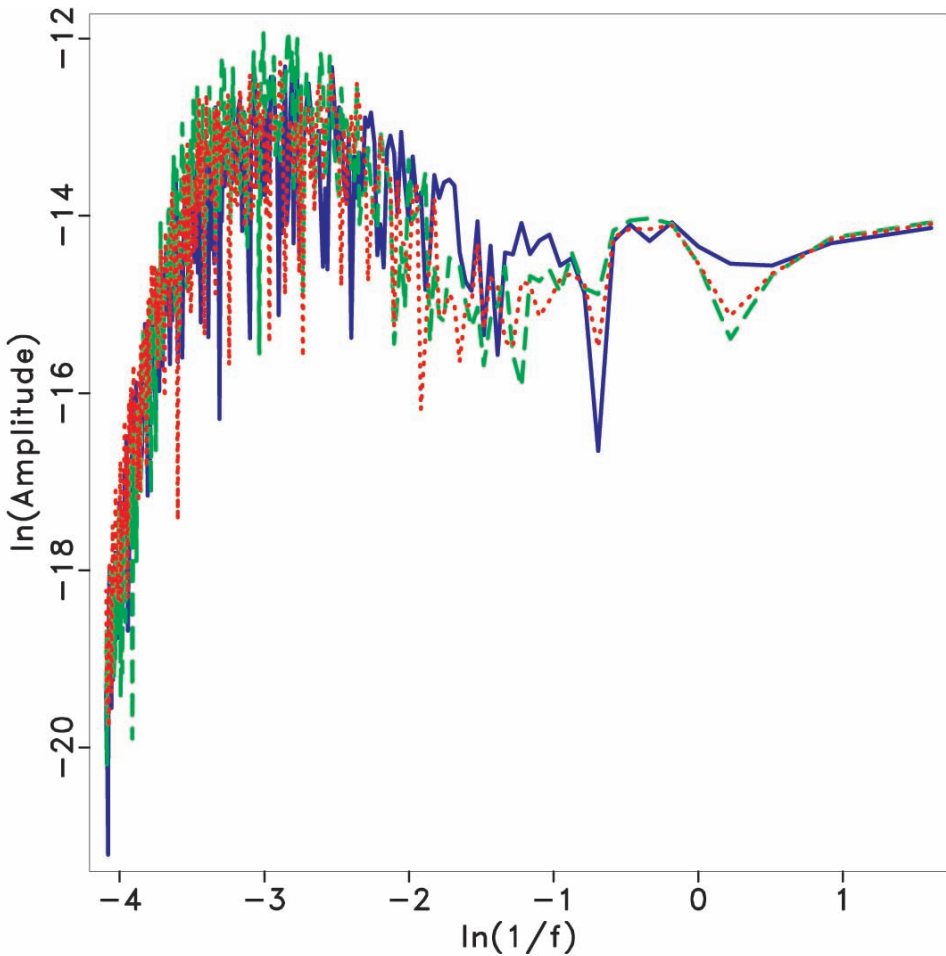


Fig. 10. Spectra comparison of data shown in Figs. 9(a)-(c) in a log-log plot. Solid: blocky-model data in Fig. 9(a); dashed: Gaussian-random data in Fig. 9(b); dotted: fractal-random data in Fig. 9(c).

From the analysis of the data spectra, it is apparent that the dominant contributor to the spectrum is the actual signal wavelet. Assuming that the wavelet is known at least approximately, we can deconvolve the wavelet from the recorded data and analyze the remaining spectrum to extract information about the model fluctuations.

Figs. 11(a)-(f) depict the log-log spectra of reflectivities extracted from data shown in Figs. 8 and 9. The left panels correspond to the data obtained by convolution, Figs. 8(a)-(c), while the right panels correspond to the data obtained by finite-differences modeling, Figs. 9(a)-(c). For both types of modeling, we obtain similar spectra which characterize the types of random model fluctuation. For example, the spectrum of the blocky model corresponds to a slope close to 1. The spectrum of the data for the model with Gaussian variability shows an exponential trend fitted by parameters $\alpha_3 = -\pi^2\sigma^2 = -0.001$, which implies that $\sigma = 0.01$, indicating a correlation length of about 10 m. The spectrum of the data for the model with fractal variability shows a linear trend fit by parameters $\alpha_1 = 0.51$ and $\alpha_1 = 0.49$, which are close to the power order of 0.50, which characterizes the velocity model. These trends are consistent with the trends obtained by analyzing the spectra of the velocity model themselves, which indicates that properties of the random component of the model are preserved in data and can be extracted, assuming that we know the corresponding wavelet with sufficient accuracy. Table 1 summarizes the fitting results for the various combinations of heterogeneity and data modeling.

Table 1. Heterogeneity parameters for the blocky, Gaussian, and fractal models. These parameters are extracted from data shown in Figs. 8 and 9 using least squares fitting.

Model	Convolution		Finite differences	
Blocky	$\alpha_1 = 0.91$	$\alpha_2 = 3.14$	$\alpha_1 = 0.81$	$\alpha_2 = 2.61$
Gaussian	$\alpha_3 = -0.001$	$\alpha_4 = 1.83$	$\alpha_3 = -0.001$	$\alpha_4 = 1.28$
Fractal	$\alpha_1 = 0.51$	$\alpha_2 = 2.85$	$\alpha_1 = 0.49$	$\alpha_2 = 2.75$

IMAGE VARIABILITY DUE TO MODEL HETEROGENEITY

The analysis performed in the preceding section addresses the question whether we can access information about the model heterogeneity through the analysis of recorded data. In this section we address an alternative question, i.e., whether we can access the same information through analysis of migrated images. For this analysis, we use a portion from a well-log acquired in the field.

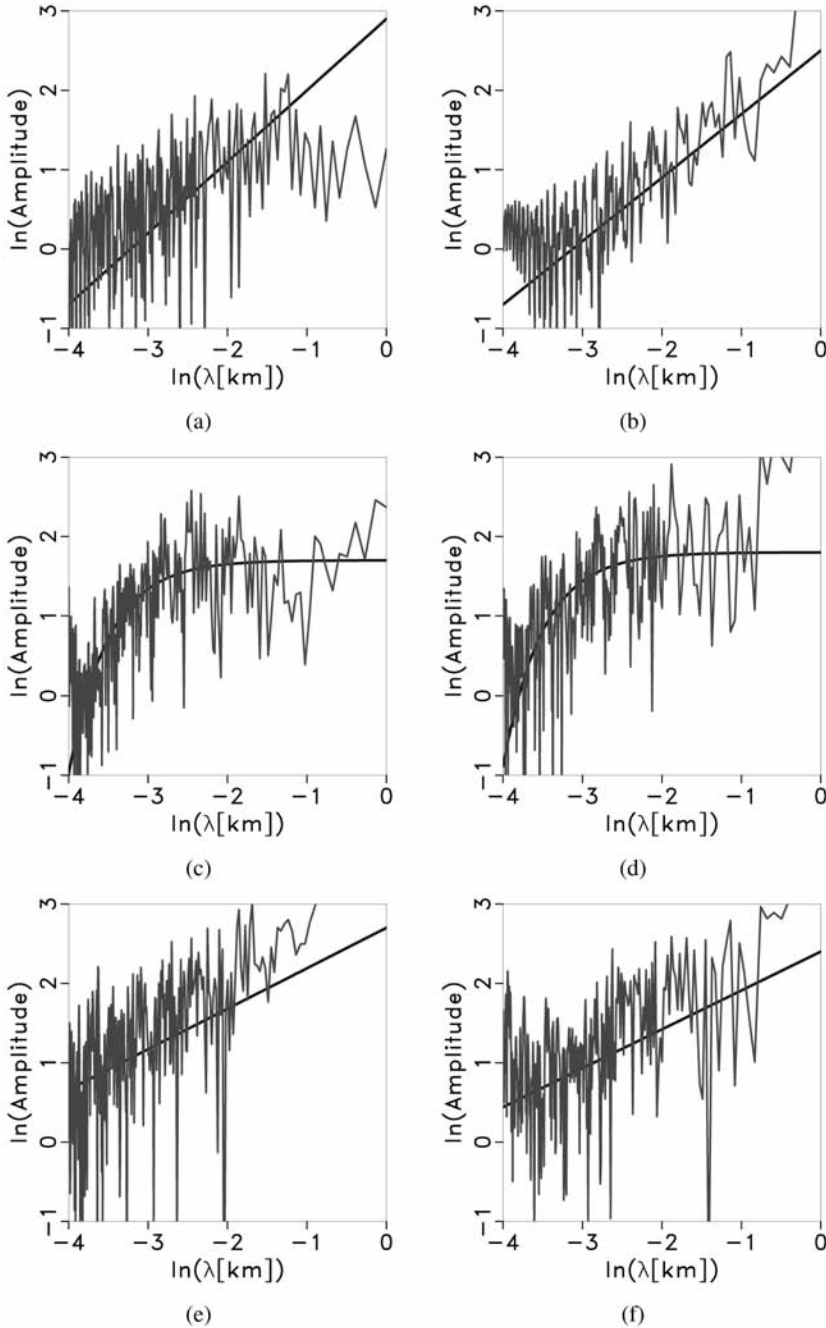


Fig. 11. Extract proofs of heterogeneity from data by deconvolving of the wavelet from the data. Left: extracted from convolution data; right: extracted from finite-difference modeling data. Top: extracted blocky information. Middle: extracted Gaussian random information. Bottom: extracted fractal information. Thick lines are least-square fittings, and coefficients for fitting results are listed in Table 1.

In this case, we do not know a-priori the nature of the randomness. Fig. 12(a) shows the P-wave velocity constructed from well measurements superimposed on a velocity model obtained as horizontal extension of the well-log.

Fig. 13(a) shows the log-log spectrum of the well-log. The thick straight line represents the linear least-squares fit applied to the spectrum. The slope is equal to 1 which is consistent to the fact that the well log is dominated by a smooth non-constant background component, or put another way, the spectrum is dominated by a slope inverse proportional with the wavenumber k (Shtatland, 1991). In order to emphasize the heterogeneities present in the model, we first remove the k^{-1} spectrum. In the k domain, according to the nonlinear least-squares fitting $y = ak^{-1}$, we estimate the intensity of the k^{-1} component which corresponds to the background velocity. Because of the linear assumption of velocity model composition, we can apply a linear operation in the k domain, i.e., we subtract the nonlinear least-squares fit from the entire spectrum. After removing the k^{-1} component, we analyze separately the remaining spectrum shown in Fig. 13(b). The slope of the linear least-squares fit is equal to 0.60 which, as expected, indicates that the model randomness has fractal character.

Fig. 12(b) shows a simulated shot record with a source located at $x = 2.0$ km, $z = 0$ km. The zero-offset trace is superimposed on the data. Migration of the data in a smoothed background velocity produces the image shown in Fig. 12(c). The zero-offset image trace is also superimposed on the image. As for the preceding example, we analyze the expression of model randomness on image using the log-log plots of the spectra, after we deconvolve the seismic wavelet from the image. Fig. 14(a) displays log-log spectra of the zero-offset image trace. As before, we separate the k^{-1} component obtaining the spectrum shown in Fig. 14(b). The linear least-squares fit to the image spectrum has a slope of 0.62, which is close to the slope obtained from the direct analysis of the well-log. Thus, we can conclude that the migrated image indicates the presence of a model with fractal dimension approximately equal to about 0.60. Fig. 15 shows the dependence of extracted heterogeneity information from image versus offset. It is apparent that the extracted heterogeneity parameters in the near offset are more precise than in the far offset.

The procedure discussed here requires knowledge of the source wavelet to extract heterogeneity parameters from data or migrated images. However, only the amplitude spectrum matters, therefore we conjecture that we can still obtain satisfactory results even if small phase errors in our wavelet estimation exist. Furthermore, the heterogeneity estimation from model, data or image is a statistical process, which is implemented by using the least-squares fitting methods. Therefore, minor errors in the frequency content should be tolerable.

Our analysis show that various types of heterogeneity look differently when analyzed in log-log plots, as illustrated in Figs. 11(a)-(f). Assuming that

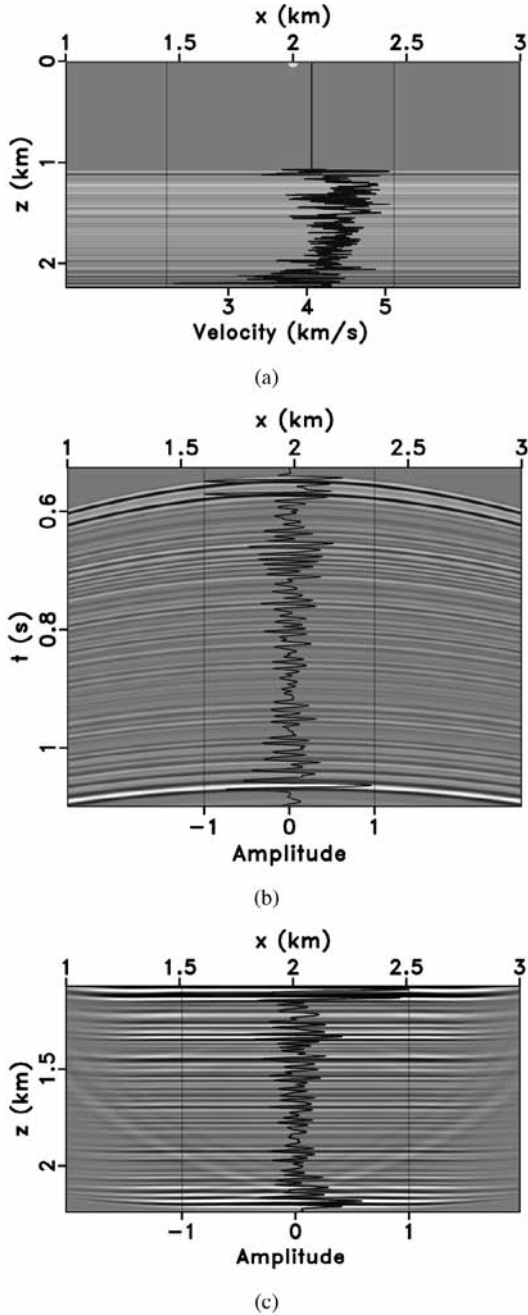


Fig. 12. (a) Well log data of P-wave velocity, extended horizontally to mimic a subsurface velocity model. (b) Data recorded in a shot-record experiment, with a shot at ($x = 2.0$ km, $z = 0$ km) and receivers on the surface; the zero-offset trace is superimposed on the data. (c) Image of the data Fig. 12(b) using migration with a conventional imaging condition and a smoothed background velocity; the vertical image trace at $x = 2.0$ km is superimposed on the image.

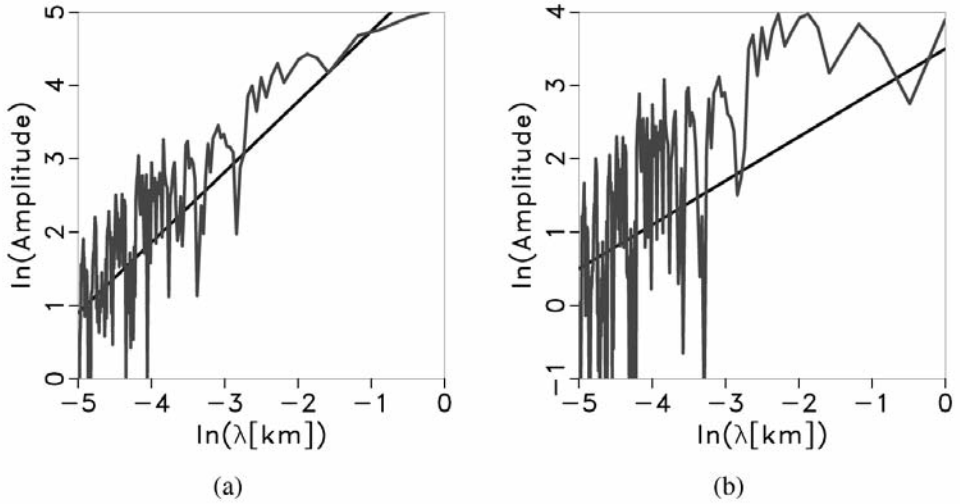


Fig. 13. (a) The log-log spectrum of the well log data. The least squares fitting (thick line) indicates that the spectrum has a slope of about 1. (b) The remanent spectrum after removing the k^{-1} component from the spectrum shown in (a). The least-squares fitting result (thick line) shows a slope of 0.60 in (b), suggesting that the heterogeneity in this well log exhibits fractal behavior.

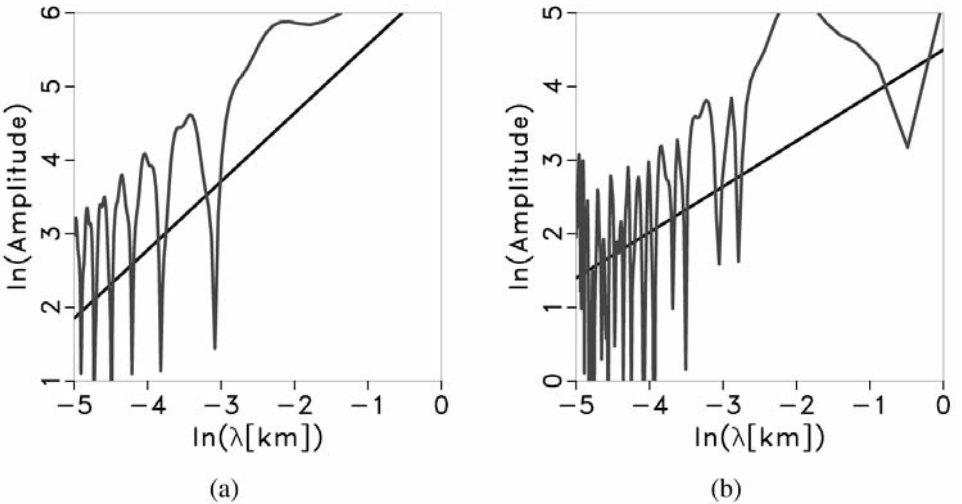


Fig. 14. (a) The log-log spectrum of the zero-offset image trace. The least squares fitting (thick line) indicates that the spectrum has a slope of about 1. (b) The remaining spectrum after removing the k^{-1} component from the spectrum shown in (a). The least-squares fitting result (thick line) shows a slope of 0.62, which is consistent with the heterogeneity parameter in the well log.

the subsurface model is a combination of a relatively smooth background plus a few strong interfaces with a blocky character, we can attempt to infer the statistics of model heterogeneities currently undetectable by conventional seismic methodology.

Alternatively, we can consider the effects of mid-scale heterogeneities on seismic data as noise and attempt to remove them from migrated images. Our experiments show that conventional denoising methods based on bandwidth analysis do not have a good chance of success given the overlap between various components of the model. However, we suggest that it would be helpful to understand the statistics of this noise before attempting to remove it.

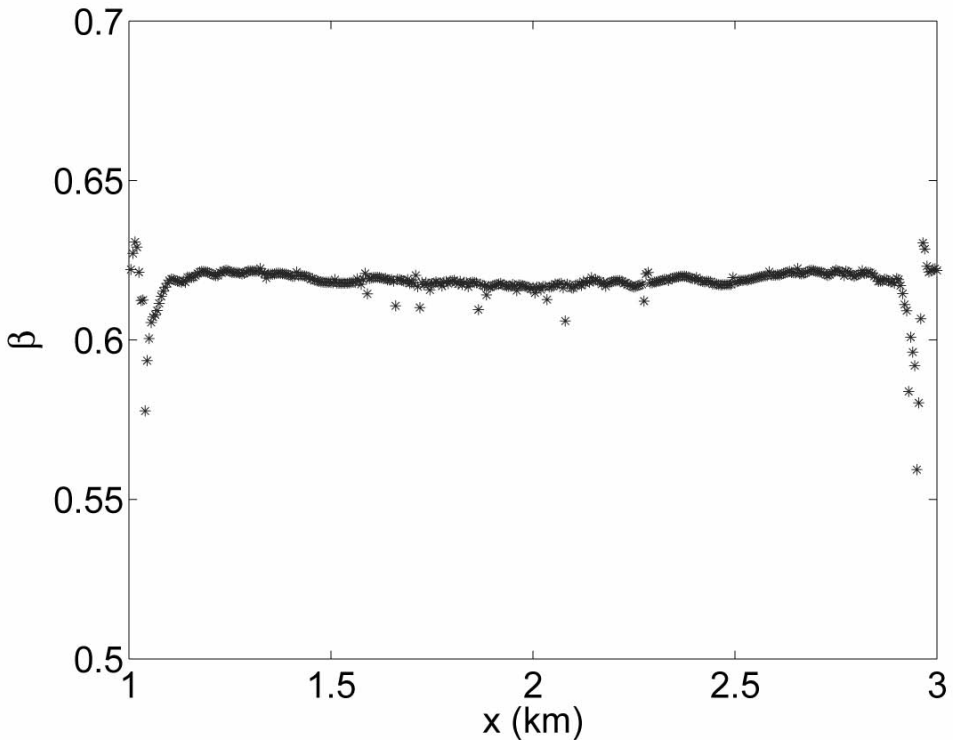


Fig. 15. The heterogeneity parameter β extracted from the image at various horizontal positions.

NOISE ATTENUATION IN SEISMIC IMAGING

Despite the fact that multi-scale heterogeneities are present in the earth, we normally describe their expression in seismic data as noise and their expression on migrated images as artifacts. This is simply because we do not have good procedures to estimate models with such variability and to image

those data. In this section, we explore the applicability of two kinds of de-noising procedures: seislet transform (ST) which belongs to the wavelet transform methods, and Gabor-Winger distribution (GWD) which belongs to the time-frequency analysis (TFA) methods.

Seislet transform

The seislet transform belongs to the general family of wavelet transform. By definition, this transformation decomposes the signal to different scales using the dominant slope at every location (Fomel, 2006). ST can be used for de-noising by a simple soft thresholding operation in the transformed domain designed to preserve the locally dominant slopes in the data or image, thus filtering out perturbations from the dominant slope. Filtering using ST makes the assumption that the data are correctly described by locally coherent events, while noise is not.

Gabor-Wigner distribution

TFA methods decompose non-stationary signals as functions of the local frequency at various times (Cohen, 1995). This type of transformation can be generalized to multi-dimensional signals, e.g., to seismic data or wavefields. Wigner distribution functions (WDF) (Wigner, 1932; Ville, 1948) are an example of TFA method with a quadratic character (Hlawatsch and Boudereaux-Bartels, 1992). WDFs are effective at suppressing noise from data, but suffer from the drawback that the phase of their output is ambiguous. To alleviate this problem, we use an alternative TFA transformation, called the Gabor-Wigner distribution (GWD) (Pei and Dng, 2007), which has the property that it attenuates the noise similarly to WDF, but without affecting the phase of the signal. For the multi-dimensional signal $s(\mathbf{x},t)$, the Gabor-Wigner distribution is given by

$$s_G(\mathbf{x},t) = s_W(\mathbf{x},t) \int_{|t_h| \leq T} dt_h \int_{|\mathbf{x}_h| \leq X} d\mathbf{x}_h g(\mathbf{x},t) s(\mathbf{x},t) \quad , \tag{10}$$

where

$$s_W(\mathbf{x},t) = \int_{|t_h| \leq T} dt_h \int_{|\mathbf{x}_h| \leq X} d\mathbf{x}_h g(\mathbf{x},t) s[\mathbf{x} - (\mathbf{x}_h/2), t - (t_h/2)] s[\mathbf{x} + (\mathbf{x}_h/2), t + (t_h/2)] \quad . \tag{11}$$

In eqs. (10) and (11), $g(\mathbf{x},t) = e^{-(\mathbf{x} - \mathbf{x}_h)^2/2\sigma_x^2} e^{-(t - t_h)^2/2\sigma_t^2}$ is a multi-dimensional Gaussian window with spatial and temporal standard deviations of

σ_x and σ_t , which has the purpose of reducing cross-talk (Choi and Williams, 1989); $s_w(\mathbf{x},t)$ is the WDF transform result of $s(\mathbf{x},t)$ the time-space domain; \mathbf{x}_h and t_h are variables spanning space and time intervals within X and T , respectively.

Strategies for noise attenuation

Wave-equation imaging for shot-record experiments consists of two steps: first, simulate the source and receiver wavefields using the background velocity model; second, apply an imaging condition to extract the reflectivity information from the reconstructed source and receiver wavefields. A conventional imaging condition extracts the image as the zero-lag of the cross-correlation between the reconstructed wavefields

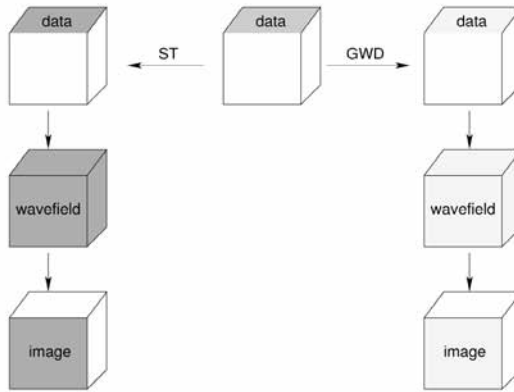
$$R(\mathbf{y}) = \int_t dt u_s(\mathbf{y},t)u_r(\mathbf{y},t) \quad , \quad (12)$$

where \mathbf{y} denotes the image coordinates, $u_s(\mathbf{y},t)$ and $u_r(\mathbf{y},t)$ are the reconstructed source and receiver wavefields, and $R(\mathbf{y})$ is the extracted image.

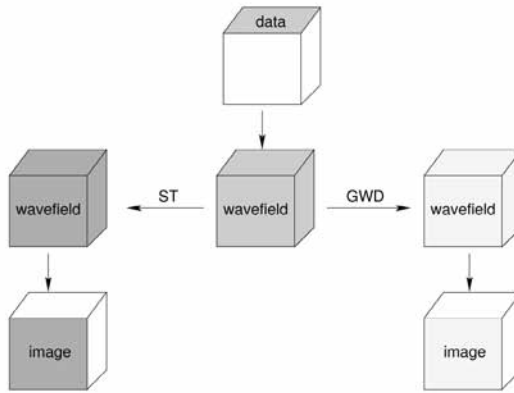
Wavefields corresponding to propagation in models with multi-scale heterogeneity are not properly reconstructed in the subsurface if we use an approximate blocky model for wavefield reconstruction. Consequently, fluctuations corresponding to the part of the model that is not accounted for during extrapolation are present in the wavefields. The question we address here is whether we can use one of the noise attenuation techniques outlined earlier to filter out the unwanted component of data. We discuss three possible strategies corresponding to filtering before wavefield reconstruction (i.e., filter the data), filtering before the imaging condition (i.e., filter the wavefields), or filtering after the imaging condition (i.e., filter the image) as shown in Fig. 16.

In workflow (a), the denoising process is directly applied to the recorded data before wavefield reconstruction. In this case, we attempt to remove from the data what we consider to be unwanted signal and then follow with a conventional imaging procedure. This option is advantageous because it operates on relatively small data volumes, but it has the disadvantage that data are often complicated with many conflicting dips which makes it difficult to define a predominant slope at some location and time.

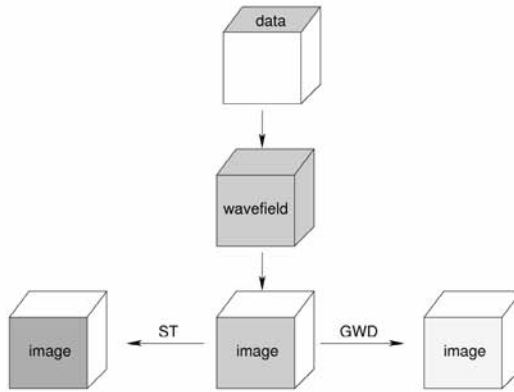
In workflow (b), the denoising process is applied to the reconstructed wavefields before the application of the imaging condition. This is the strategy employed by Sava and Poliannikov (2008) in the design of the so-called interferometric imaging condition based on WDFs. This option is advantageous



(a)



(b)



(c)

Fig. 16. Workflows with denoising methods ST and GWD operated on (a) data, (b) wavefield, and (c) image.

because we take into consideration the redundancy of the entire reconstructed seismic wavefields to define the locally dominant components, but it has the disadvantage that it operates on large data volumes making it computationally expensive.

In workflow (c), the denoising is applied to the migrated image after the application of the imaging condition. This option is advantageous because we apply it directly on the final product of the imaging process, thus removing all types of artifacts that are not locally consistent, and that it is computationally efficient since it operates on small data volumes. This option is disadvantageous because it assumes the presence of single dominant events at every location, which eliminates from consideration geologic structures with sharp truncations.

SYNTHETIC EXAMPLE

We apply the technique proposed in the preceding section to the models shown in Figs. 17(a)-(c), which are based on the Sigsbee 2A model. The models are characterized by correlated random Gaussian heterogeneities, Fig. 17(b), and fractal heterogeneities, Fig. 17(c). The blocky model shown in Fig. 17(a) is used as a reference.

The goal of this experiment is to evaluate whether the attenuation techniques described earlier can reduce the noise in the final migrated images. We simulate data using the models with random fluctuations and image by reverse-time migration using a smooth version of the background model, Fig. 17(a). In all experiments, we use wavelets with a central frequency $f = 20$ Hz, the model is discretized on a grid with $\Delta x = \Delta z = 0.00762$ km, and the perturbations represent 10% of the background model. Figs. 17(d)-(f) show the simulated data for the velocity models shown in Figs. 17(a)-(c), respectively.

Figs. 18(a)-(c) show the images obtained by migrating the data in Figs. 17(d)-(f) with the smooth background velocity model [a smoothed version of Fig. 17(a)]. Fig. 18(a) corresponds to modeling and migration using models without random fluctuations and serves as a reference for all subsequent migrations. Both images constructed from data corresponding to the random models, Figs. 18(b) and 18(c), are corrupted with artifacts due to incorrect wavefield reconstruction in the subsurface. In contrast, Figs. 18(d)-(f) show the images obtained by migrating the data in Figs. 17(d)-(f) with the same velocity models where data are acquired. Consider reverse-time migration, which is the method used in this article. Although wavefields can be better focused if we back propagate wavefields in the correct velocity with heterogeneity, multiple scattering caused by multi-scale heterogeneity still remains. Migration based on Born approximation cannot relocate the multiple scattering in the wavefield. Therefore, we cannot find significant differences or improvements from Figs.

18(d)-(f), except for some minor phase and amplitude changes. It is necessary to remove the multi-scale heterogeneity component from the image to obtain a clear subsurface structure, which is beneficial to geological interpretation. In the following paragraphs, we discuss the application of the seislet transform (ST) and the Gabor-Wigner distribution (GWD) for the three implementation strategies discussed earlier.

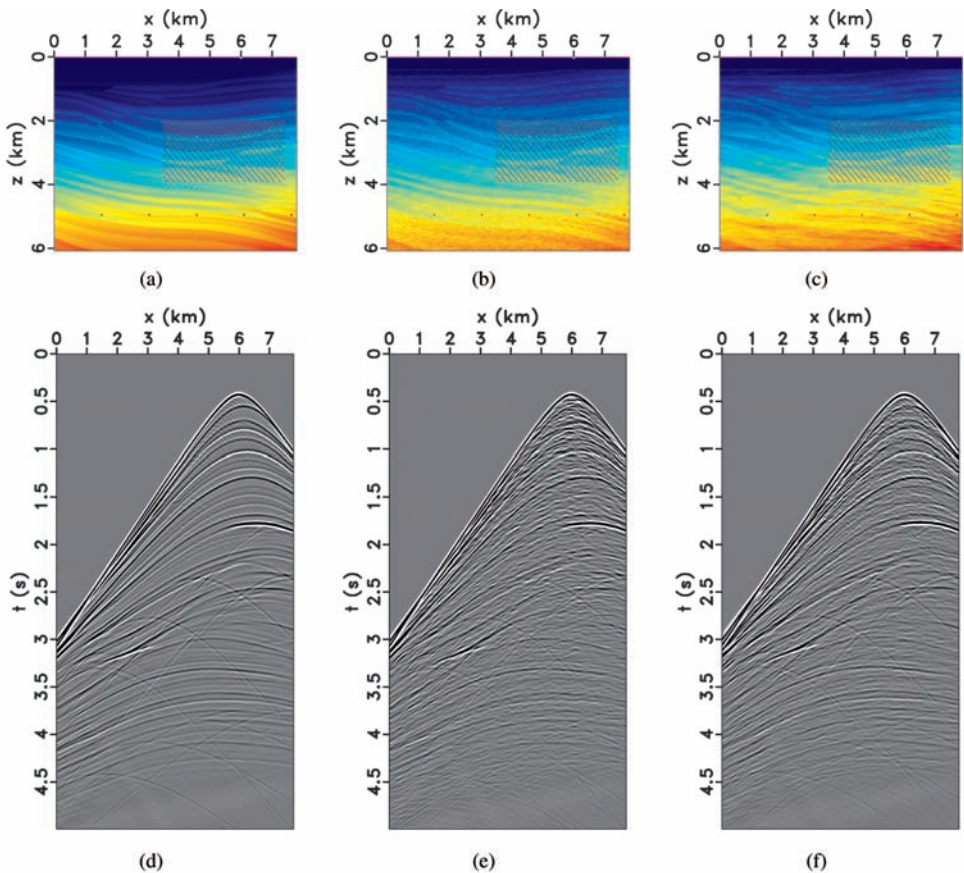


Fig. 17. Sigsbee 2A models: (a) blocky velocity, (b) Gaussian random velocity and (c) fractal velocity. Finite-difference modeled data for a source located at $x = 6.0$ km and receivers distributed along the surface corresponding to (d) the blocky model, (e) the Gaussian random model and (f) the fractal random model.

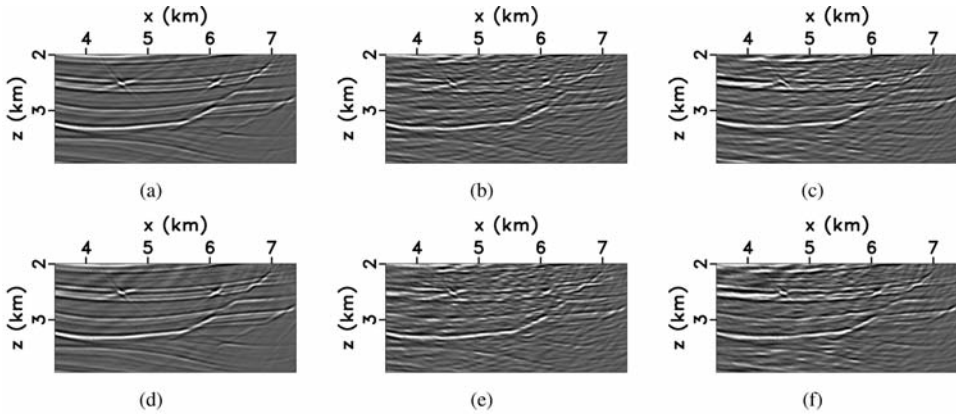


Fig. 18. Panels (a)-(b)-(c) correspond to migrated image with the conventional imaging condition using the smooth background velocity. Panels (d)-(e)-(f) correspond to migrated image with the conventional imaging condition using the same velocity model for both modeling and migration. Left: blocky model; middle: Gaussian random model; right: fractal model.

Figs. 19(a)-(f) correspond to the data simulated with the model characterized by Gaussian fluctuations, Fig. 17(e). Panels 19(a)-(c) correspond to de-noising using the ST applied to the data, wavefield and image, respectively, and panels 19(d)-(f) correspond to de-noising using GWD applied to the data, wavefield and image, respectively. Likewise, Figs. 20(a)-(f) correspond to the data simulated with the model characterized by fractal fluctuations, Fig. 17(f). Panels 20(a)-(c) correspond to de-noising using the ST applied to the data, wavefield and image, respectively, and panels 20(d)-(f) correspond to de-noising using GWD applied to the data, wavefield and image, respectively.

Both ST and GWD used in all three workflows help reduce the random fluctuations from the migrated images, although none produces images with the coherence comparable with that of the reference image, Fig. 18(a). This is not surprising since both de-noising techniques attempt to filter-out information incorrectly positioned in the subsurface, rather than relocate it. However, it is apparent that better results are produced when de-noising is applied to the wavefields, rather than to the data or the image. The main reason for this is that more coherency exists in the wavefields along the space and time axes. The data and the image are subsets of the wavefields, therefore these domains are not as effective at noise suppression. Compared with ST and GWD, WDF can similarly attenuate the random fluctuations from migrated images. However, the polarity information of reflectors is made ambiguous by WDF. This ambiguity will mislead geological interpretation.

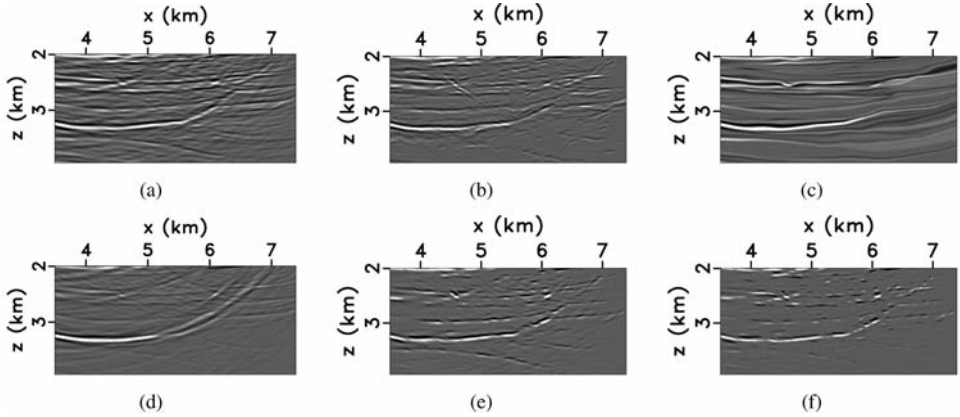


Fig. 19. Images corresponding to the model with correlated Gaussian random fluctuations. Panels (a)-(b)-(c) correspond to denoising with ST applied to the data, wavefield and image, respectively. Panels (d)-(e)-(f) correspond to denoising with GWD applied to the data, wavefield and image, respectively.

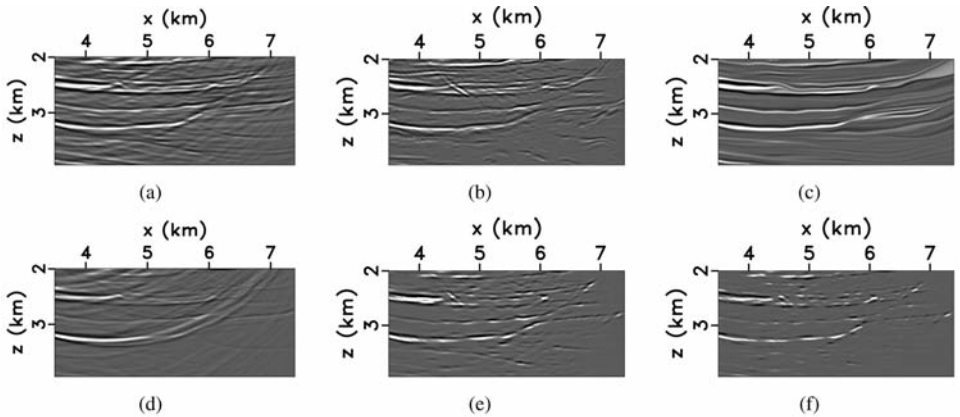


Fig. 20. Images corresponding to the model with fractal velocity fluctuations. Panels (a)-(b)-(c) correspond to denoising with ST applied to the data, wavefield and image, respectively. Panels (d)-(e)-(f) correspond to denoising with GWD applied to the data, wavefield and image, respectively.

We can quantify the differences between the various de-noised images and our benchmark image using the mean squared error (MSE) (Lehmann and Casella, 2003). The MSE values characterize the dissimilarity between the de-noised images and the reference and the larger the MSE value, the more

dissimilar the images. The raw images shown in Figs. 18(b) and 18(c) have a mean squared error of 0.011 and 0.014, respectively, relative to the benchmark image shown in Fig. 18(a). Table 2 lists the mean square errors between the images in Figs. 19(a)-(f) and Figs. 20(a)-(f) relative to the benchmark image. According to this analysis, the best denoising strategy is to apply either ST or GWD on the wavefields after wavefield reconstruction but before the imaging condition, with a slight efficiency advantage for GWD relative to ST.

Table 2. MSEs comparisons of images in Figs. 19 and 20 with the benchmark image in Fig. 18(a).

workflow	Figure 19		Figure 20	
	ST	GWD	ST	GWD
a	0.0100	0.0094	0.0104	0.0112
b	0.0076	0.0066	0.0103	0.0088
c	0.0093	0.0107	0.0133	0.0104

CONCLUSIONS

We compare different types of multi-scale heterogeneities and investigate whether information about the parameters characterizing such models can be derived from the images. Assuming that we can estimate the seismic wavelet with sufficient accuracy, we can isolate reflectivity profiles from both recorded data and migrated images and extract the media properties. We can identify models with correlated Gaussian fluctuations by their exponential dependence in log-log spectra. In contrast, models with fractal fluctuations show, as predicted by the theory, a linear dependence of the log-log spectra with a fractional slope. This conclusion holds for both the data and image domains. Regardless of the type of fluctuations in the model, imaging with approximate velocity (e.g., blocky models) leaves a distinct random-looking imprint on the migrated images which may obstruct identification of geologic structures. We refer to this kind of imprint as noise and attempt to remove it using conventional statistical procedures. We test the seislet transform (wavelet-like method) and Gabor-Wigner distributions (time/frequency-like method) to attenuate noise at different stages of depth migration. The noise attenuation can be applied to the data before wavefield reconstruction, or to the reconstructed wavefields, or to the migrated image, after the application of the imaging condition. Of all possibilities, filtering of the wavefield seems to be the most effective method of

noise attenuation, although this option is also the costliest. The future study of this work could be applying the analysis of heterogeneity to design filters that can differ signal from noise, according to each unique property of the background velocity and the heterogeneity perturbation.

ACKNOWLEDGMENT

We acknowledge the support of the sponsors of the Center for Wave Phenomena at Colorado School of Mines. We are grateful to Prajnajyoti Mazumdar from the Colorado School of Mines Reservoir Characterization Project (RCP) for supplying the well log data.

REFERENCES

- Borcea, L., Papanicolaou, G. and Tsogka, C., 2006. Coherent interferometric imaging in clutter. *Geophysics*, 71: S1165-S1175.
- Choi, H.I. and Williams, W.J., 1989. Improved time-frequency representation of multicomponent signals using exponential kernels. *IEEE Trans. Acoust. Speech Signal Proces.*, 37: 862-871.
- Claerbout, J.F., 1985. *Imaging the Earth's Interior*. Blackwell Scientific Publications, Cambridge.
- Cohen, L., 1995. *Time Frequency Analysis*. Prentice Hall, New Jersey.
- Dolan, S.S., Bean, C.J. and Rioulet, B., 1998. The broad-band fractal nature of heterogeneity in the upper crust from petrophysical logs. *Geophys. J. Internat.*, 132: 489-507.
- Fomel, S., 2006. Towards the seislet transform. *Expanded Abstr.*, 76th Ann. Internat. SEG Mtg., New Orleans, 25: 2847-2850.
- Hlawatsch, F. and Boudereaux-Bartels, G.F., 1992. Linear and quadratic time-frequency signal representation. *IEEE Signal Proc.*, 24: 21-67.
- Hoshiya, M., 2000. Large fluctuation of wave amplitude produced by small fluctuation of velocity structure. *Phys. Earth Plan. Inter.*, 120: 201-217.
- Lehmann, E.L. and Casella, G., 2003. *Theory of Point Estimation*, 2nd ed. Springer-Verlag, New York.
- Mandelbrot, B.B., 1982. *The Fractal Geometry of Nature*. Freeman & Co., San Francisco.
- Pei, S.C. and Ding, J.J., 2007. Relations between Gabor transforms and fractional Fourier transforms and their applications for signal processing. *Signal Proc.*, *IEEE Transact.*, 55: 4839-4850.
- Richter-Bernburg, G., 1987. *Deformation within salt bodies in dynamical geology of salt and related structures*. Academic Press, New York.
- Sava, P. and Poliannikov, O., 2008. Interferometric imaging condition for wave-equation migration. *Geophysics*, 73: S47-S61.
- Shtatland, E.S., 1991. Fractal stochastic models for acoustic impedance: An explanation of scaling or 1/f geology and stochastic inversion. *Expanded Abstr.*, 61th Ann. Internat. SEG Mtg., Houston: 1598-1601.
- Stefani, J. and De, G.S., 2001. On the power-law behavior of subsurface heterogeneity. *Expanded Abstr.*, 71st Ann. Internat. SEG Mtg., San Antonio: 2033-2036.
- Turcotte, D.L., 1997. *Fractals and Chaos in Geology and Geophysics*. Cambridge University Press, Cambridge.
- Ville, J., 1948. Theorie et applications de la notion de signal analytique. *Cables et Transmissions*, 2A: 61-74.
- Wigner, E., 1932. On the quantum correction for thermodynamic equilibrium. *Physical Rev.*, 40: 749-759.